

ALLISON Transmission Controls (TBar-5505 Series)

ALLISON AT,MT,V,CLT,HT Series

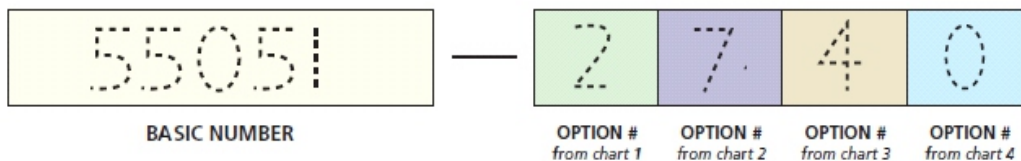
Transmission Models	BASIC NUMBER				2nd Neutral P-B Shifter	Position Strip
	T-Handle	Push Button	Shift Inhibitor			
ALLISON AT 540, AT 545, AT 543 MT 643, MT 647, MT 644 (MT 640)	55051	55751	56051	—	R,N,D,3,2,1	
MT 653 DR CLT 650 (MT 650)	55052	55752	56052	—	R,N,2-5,2-4,2,1	
MT 654 CR, MT 750 CRD CLT 654	55053	55753	56053	—	R,N,1-5,1-4,1-3,1-2,1	
HT 754 CR	—	—	56054	—	R,N,D,4,3,2,1	
V 730	55054	55754	—	—	R,N,D,2,1	
HT 750 DRD CL (B) T 750	55055	55755	56055	—	R,N,2-5,2-4,2-3,2,1	
HT 740, HT 740FS, HT 740RS	55056	55756	56056	—	R,N,D,3,2,1	
AT542N, AT545N AT1542N, AT1545N	—	—	—	55934 MECHANICAL USES CABLE	P-B,R,N,D,D3,D1	
AT542N, AT545N AT1542N, AT1545N	—	—	—	55946 ELECTRICAL	P-B,R,N,D,D3,D1	

How to Order the Shifter

Ordering the exact shifter that meets your requirements is not difficult. Simply follow the instructions below to create your own part number. (Example: you are ordering basic part #55051 to fit your Allison transmission #MT 643. You desire the following configuration: Right-hand mount/reverse to front (Chart 1, Option #2); push to reverse/vertical cable hanger (Chart 2, Option #7); 4 Series Cable (Chart 3, Option #4); No Switches (Chart 4, Option #0). Your part number would be 55051-2740.)

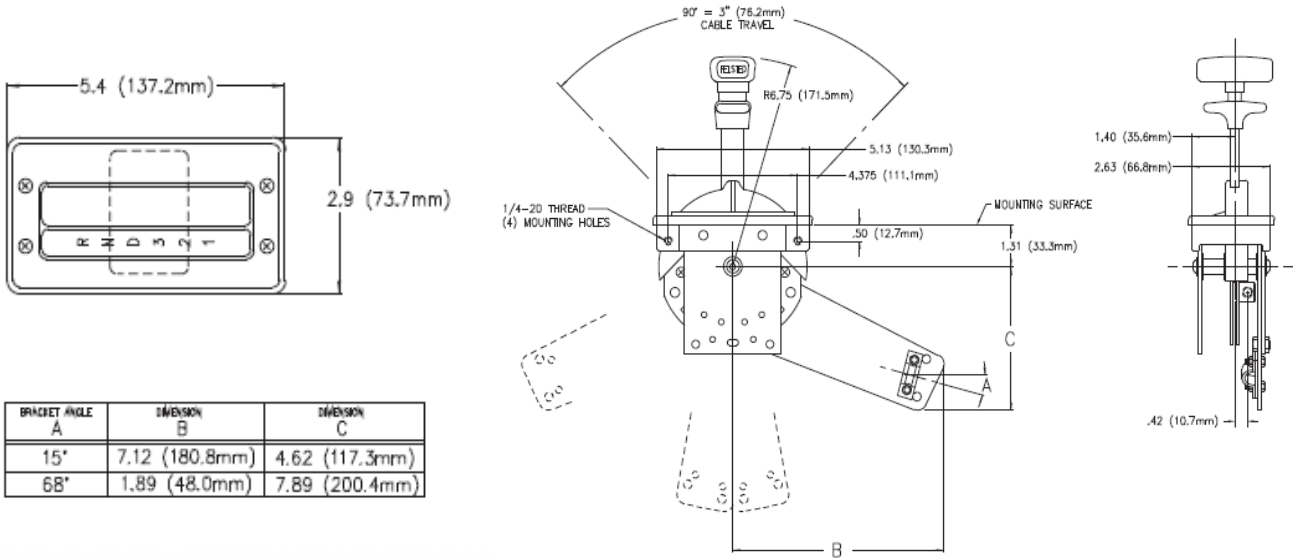
1. Match your automatic transmission model to the basic part number. This is your BASIC NUMBER.
2. Refer to Charts 1 through 4 on this page for assembly configuration in order to meet vehicle and system requirements. (Not applicable to Shift Inhibitor and 2nd Neutral P-B Shifter.)
3. Follow the form below and enter the option number desired from each chart in the appropriate order.

EXAMPLE



ALLISON Transmission Controls (TBar-5505 Series)

ALLISON AT,MT,V,CLT,HT Series



BRACKET ANGLE A	DIMENSION B	DIMENSION C
15°	7.12 (180.8mm)	4.62 (117.3mm)
68°	1.89 (48.0mm)	7.89 (200.4mm)

CONTROL MOUNT/REVERSE POSITION OPTIONS CHART 1

Vehicle Front Reverse to Front

Vehicle Front Reverse to Rear

OPTION #1 Left-Hand Mount
OPTION #2 Right-Hand Mount
OPTION #3 Left-Hand Mount
OPTION #4 Right-Hand Mount

CABLE SERIES OPTIONS CHART 3

OPTION #4
4 Series
1/4 - 28 Thread (.25 - 28)

OPTION #6
6 Series
5/16 - 24 Thread (.31 - 24)

ELECTRIC SWITCH OPTIONS CHART 4

OPTION #0
No Switches

OPTION #1
Reverse Switch

OPTION #2
Neutral Switch

OPTION #3
Reverse and Neutral Switch

CABLE HANGER BRACKET POSITION OPTIONS CHART 2

REVERSE TO FRONT - USE WITH CONTROL MOUNT OPTIONS 1 & 2

REVERSE TO REAR - USE WITH CONTROL MOUNT OPTIONS 3 & 4

OPTION #1 Cable PULLS Transmission Arm into REVERSE
OPTION #5 Cable PUSHES Transmission Arm into REVERSE
OPTION #2 Cable PUSHES Transmission Arm into REVERSE
OPTION #6 Cable PULLS Transmission Arm into REVERSE
OPTION #3 Cable PULLS Transmission Arm into REVERSE
OPTION #7 Cable PUSHES Transmission Arm into REVERSE
OPTION #4 Cable PUSHES Transmission Arm into REVERSE
OPTION #8 Cable PULLS Transmission Arm into REVERSE

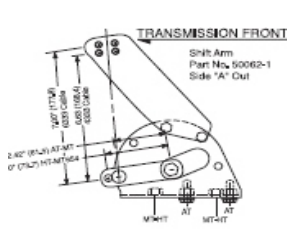
Items now available online

ALLISON Transmission Controls (TBar-5505 Series)

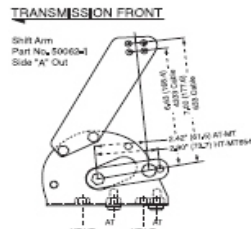
ALLISON AT,MT,V,CLT,HT Series

Transmission Connection Kits

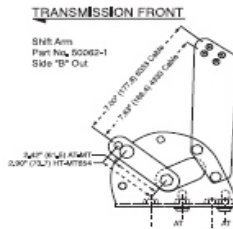
Transmission kits come complete with shift arm, transmission mounting bracket, cable hanger and required hardware. Connection kits are designed to fit any of the five most popular entry positions to the transmission shift arm. Refer to the following drawings to find the cable entry that best fits your vehicle requirements and shifter control positions (push to reverse, pull to reverse), then assemble the kit to match the installation required. Shown below are configurations that can be made from the Universal Kit. (Universal Kit #59005 includes all parts to assemble any 59004 and 59006 kit configuration.)



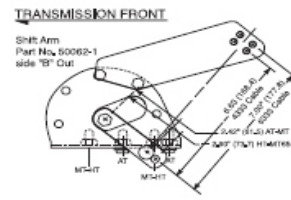
CONFIGURATION #1
Cable **PUSHES** Transmission Arm into REVERSE.
Use with Shifter Control Positions numbers 2, 4, 5, 7.
Cable 100-4333-L / 100-6333-L



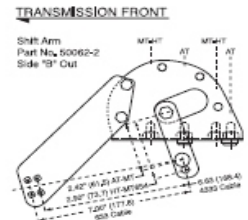
CONFIGURATION #2
Cable **PULLS** Transmission Arm into REVERSE.
Use with Shifter Control Positions numbers 1, 3, 6, 8.
Cable 100-4333-L / 100-6333-L



CONFIGURATION #3
Cable **PUSHES** Transmission Arm into REVERSE.
Use with Shifter Control Positions numbers 2, 4, 5, 7.
Cable 100-4333-L / 100-6333-L

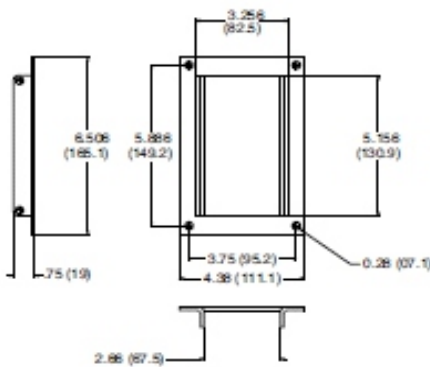


CONFIGURATION #4
Cable **PULLS** Transmission Arm into REVERSE.
Use with Shifter Control Positions numbers 1, 3, 6, 8.
Cable 100-4333-L / 100-6333-L



CONFIGURATION #5
Cable **PUSHES** Transmission Arm into REVERSE.
Use with Shifter Control Positions numbers 2, 4, 5, 7.
Cable 100-4333-L / 100-6333-L

Accessories



MOUNTING FLANGE

59002
Made of prefabricated steel with a matte black epoxy finish. Simplifies a top mount installation and is perfect for vehicle conversions. Kit is complete with control mounting hardware. Use with cable hanger bracket in any position.

SWITCH AND PIN SET KIT

50036-1

SWITCH SET

50036-2

PIN SET

50036-3

FINGER RELEASE KIT

59193-1

T-HANDLE KIT

59228

TRANSMISSION CONNECTION KITS

UNASSEMBLED UNIVERSAL KIT OIL PAN MOUNT

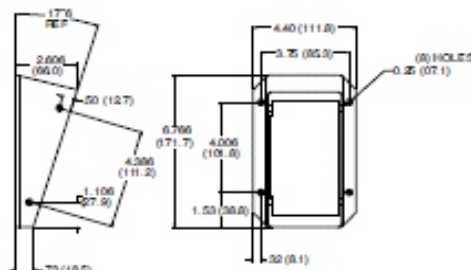
- 59004 4 Series
- 59006 6 Series
- 59005 4 and 6 Series Hardware

Kits to be assembled in field to fit installation required.

MACHINE PAD MOUNT

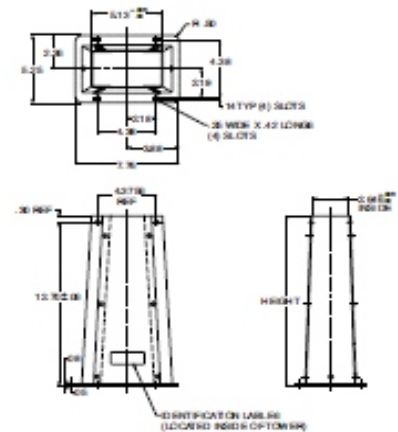
- 59369-1 4 Series
- 59369-2 6 Series

Mount to machine pad above the transmission shift arm. They do not mount to oil pan bolts as shown in diagrams above.
* HT Series, MT 654 with 4.5" oil pan.
For refuse and HD applications.



MOUNTING WEDGE

59009
A cast aluminum wedge with a matte black epoxy finish. Raises the shifter to a 17° angle from desired mounting surface. Kit is complete with control mounting hardware. Use with cable hanger bracket in any position except #1 or #2.



MOUNTING TOWER

59000 (13")
59035 (9")
A prefabricated tower with a matte black epoxy finish. Features access panels on both sides for easy installation and adjustment. A rubber floor gasket is included with tower. Kit is complete with control mounting hardware. For use with cable hanger positions #3, 4, 7, and 8 ONLY!

PUSH-PULL SHIFT CABLES

(Used with Controls and Kits)
4 Series: 1/4 - 28 thread, base part number: 100-4333 length (recommended)
6 Series: 5/16 - 24 thread, base part number: 100-6333 length